

Medmate Clinic Adapter Installation Guide

Complete Registration

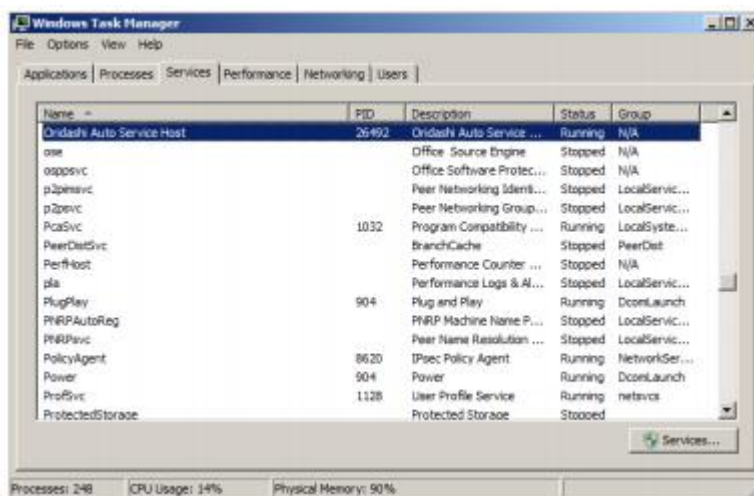
1. Please complete the below registration form to begin the formal process.
 - <https://medmate.com.au/partner-clinic-registration/>

Install Software

- *Medmate software connects your clinic to Radiology and Pathology providers.*
 - *Medmate Service runs in the background at clinics as a Windows service.*
2. Setup the Medmate software called “MedmateHost” on the practice database server.
 3. You will require Windows administrator rights for the server to install the Medmate software.
 4. Download Medmate software from:
 - <https://medmate.com.au/app/SetupMedmateHost.exe>
 - Note: You may receive a warning message. Please click allow.
 5. Run SetupMedmateHost.exe as administrator.
 6. Complete installing via the wizard.

Check Operations

- Open Windows Task Manager and look in the Services area.
- Observe the Medmate software called **Oridashi Auto Service** Host service is running.



- Notify Medmate of the new site for connection checks and further configuration of services.

Support

Please contact support@medmate.com.au if you require any assistance regarding the installation.